

Global robustness versus local vulnerabilities in complex synchronous networksMelvyn Tyloo^{1,3} and Philippe Jacquod^{2,3}¹*Institute of Physics, École Polytechnique Fédérale de Lausanne (EPFL), CH-1015 Lausanne, Switzerland*²*Department of Quantum Matter Physics, University of Geneva, CH-1211 Geneva, Switzerland*³*School of Engineering, University of Applied Sciences of Western Switzerland HES-SO, CH-1951 Sion, Switzerland*

(Received 9 May 2019; published 5 September 2019)

In complex network-coupled dynamical systems, two questions of central importance are how to identify the most vulnerable components and how to devise a network making the overall system more robust to external perturbations. To address these two questions, we investigate the response of complex networks of coupled oscillators to local perturbations. We quantify the magnitude of the resulting excursion away from the unperturbed synchronous state through quadratic performance measures in the angle or frequency deviations. We find that the most fragile oscillators in a given network are identified by centralities constructed from network resistance distances. Further defining the global robustness of the system from the average response over ensembles of homogeneously distributed perturbations, we find that it is given by a family of topological indices known as generalized Kirchhoff indices. Both resistance centralities and Kirchhoff indices are obtained from a spectral decomposition of the stability matrix of the unperturbed dynamics and can be expressed in terms of resistance distances. We investigate the properties of these topological indices in small-world and regular networks. In the case of oscillators with homogeneous inertia and damping coefficients, we find that inertia only has small effects on robustness of coupled oscillators. Numerical results illustrate the validity of the theory.

DOI: [10.1103/PhysRevE.100.032303](https://doi.org/10.1103/PhysRevE.100.032303)**I. INTRODUCTION**

Complex networks are widely used to model nature- as well as man-made coupled dynamical systems [1]. Physical realizations of such systems range from microscopic Josephson junction arrays [2] and interacting molecules in chemical reactions [3,4] to macroscopic high voltage electric power grids [5] and communication or social networks [6,7]. Individual elements are represented by nodes in a complex network, which have internal parameters and degrees of freedom. The latter are governed by differential equations that depend on both the internal dynamics of the individual elements and the coupling to the adjacent nodes. Two central questions are (i) how to identify nodes, which, once attacked, perturbed or removed, have the most dramatic effect on the overall dynamics of the coupled system and (ii) how to devise a coupling network guaranteeing robustness of the system against random external perturbations. Attempts to answer such questions are often based on complex network theory, numerically relating dynamical effects to graph-theoretic metrics. This approach has been often criticized, e.g., in Refs. [8–10], because (i) it gives no *a priori* criterion for which metric should be considered in which situation and (ii) it does not directly incorporate the intrinsic dynamics of the network-coupled system.

Here we propose an altogether different analytical approach. First, we use robustness performance measures that quantify the excursion during the transient dynamics following a perturbation. Second, we spectrally decompose the coupling matrix to calculate the response of the system to some external perturbations. Third, by direct calculation, we relate the obtained analytical expressions for performance measures

(i) to local centralities when analyzing local vulnerabilities, and (ii) to global topological indices when assessing global robustness of the networked system. Following these steps, we identify a new class of local and global topological indices that characterize robustness of synchrony of complex network-coupled oscillators. Our method builds up on investigations of consensus algorithms [11,12], electric power systems [13–15] and coupled oscillators systems [16,17]. Already implicitly present in Refs. [12,14,15], the Kirchhoff index was first identified as a global robustness quantifier in our earlier work, Ref. [16]. Local vulnerabilities have been more recently connected to centralities related to the resistance distance [12,17].

In this manuscript, we investigate vulnerabilities and global robustness of synchronous network-coupled oscillators. Frequency synchronization often occurs in such systems when the coupling between individual oscillators is strong enough that they start to oscillate at the same frequency, even when their natural frequency is not homogeneous [18,19]. Frequency synchronization has attracted a large interest, in particular, the robustness of the synchronous state has been studied from a variety of points of view. One may, for instance, consider the linear stability of the synchronous state [20], the range of network parameters where synchrony occurs [21–23], the volume of the basin of attraction of the synchronous state [24–26], the influence of noise on the synchronous state, in particular how it can lead to desynchronization or drive the system to another synchronous state [27–32], how disturbances spread across the network [33–35], or even how topological changes affect synchrony [36–38]. Here, we investigate the robustness of the synchronous state against external perturbations. For both local and ensemble-averaged perturbations on oscillators with identical dynamical

parameters, we find that the robustness of the synchronous state is given by a new family of topological indices based on the resistance distance [16,17,39].

The manuscript is organized as follows. Section II recalls the definition of the resistance distance and generalizes it to graphs corresponding to powers of the Laplacian matrix. Section III describes our model of coupled oscillators, briefly discusses synchronized states and evaluates how they respond to external perturbations. Performance measures quantifying this response are also introduced and calculated for quench perturbations. Section IV numerically illustrates the theory on different graphs for local and global vulnerabilities. An analysis of Kirchhoff indices in both small-world and regular networks is also done. We conclude in Sec. V.

II. RESISTANCE DISTANCES, CENTRALITIES, AND KIRCHHOFF INDICES

The resistance distance $\Omega_{ij}^{(1)}$ is a graph-theoretic metric with an intuitive physical interpretation [39]. To any graph, one associates an electrical network of resistors whose capacities are given by the inverse of the edge weights. In this case, $\Omega_{ij}^{(1)}$ is the effective resistance between i and j , i.e., the voltage that develops between i and j when a unit current is injected at i and collected at j with no injection nor collection at any other node. The resistance distance can be expressed with the network Laplacian matrix \mathbb{L} as

$$\Omega_{ij}^{(1)} = \mathbb{L}_{ii}^\dagger + \mathbb{L}_{jj}^\dagger - \mathbb{L}_{ij}^\dagger - \mathbb{L}_{ji}^\dagger, \quad (1)$$

where \mathbb{L}^\dagger is the Moore-Penrose pseudoinverse of \mathbb{L} . The resistance distance can be formulated in a convenient way using eigenvectors \mathbf{u}_α and eigenvalues λ_α of \mathbb{L} . It is given by [38,40]

$$\Omega_{ij}^{(1)} = \sum_{\alpha \geq 2} \frac{(u_{\alpha,i} - u_{\alpha,j})^2}{\lambda_\alpha}, \quad (2)$$

where the zero-eigenvector of \mathbb{L} corresponding to $\lambda_1 = 0$ is omitted in the sum. The resistance distance is a graph-theoretic distance metric because (i) $\Omega_{ii}^{(1)} = 0$, $\forall i$, (ii) $\Omega_{ij}^{(1)} \geq 0 \forall i, j$, and (iii) $\Omega_{ij}^{(1)} + \Omega_{jk}^{(1)} \geq \Omega_{ik}^{(1)}$, $\forall i, j, k$ (triangle inequality) [39].

A measure of nodal centrality is given by the inverse of the average resistance distance from any node k to all other network nodes,

$$C_1(k) = \left[n^{-1} \sum_j \Omega_{kj}^{(1)} \right]^{-1} = \left[\sum_{\alpha \geq 2} \frac{u_{\alpha,k}^2}{\lambda_\alpha} + n^{-2} Kf_1 \right]^{-1}. \quad (3)$$

It is a closeness centrality in the usual sense [9], meaning in particular that large values of $C_1(k)$ indicate nodes k that are central in the network according to the resistance distance $\Omega_{ij}^{(1)}$. The second term in bracket on the right-hand side of Eq. (3) is a graph topological index known as the Kirchhoff index of the network and defined by [39]

$$Kf_1 = \sum_{i < j} \Omega_{ij}^{(1)} = n \sum_{\alpha \geq 2} \lambda_\alpha^{-1}, \quad (4)$$

where the second equality follows from Eq. (2) [16].

Until now we have introduced global topological indices and local centralities expressed through resistance distances of the original coupling network. In the upcoming sections, we show how resistance distances naturally come out when quantifying robustness of network-coupled oscillators, but that new distance metrics related to powers of the Laplacian matrix also emerge. We therefore generalize Eqs. (1)–(4) to quantities corresponding to the p^{th} power \mathbb{L}^p of the Laplacian matrix ($p \in \mathbb{N}$). This matrix is still a Laplacian matrix, and the associated resistance distance is defined as

$$\Omega_{ij}^{(p)} = (\mathbb{L}^p)_{ii}^\dagger + (\mathbb{L}^p)_{jj}^\dagger - (\mathbb{L}^p)_{ij}^\dagger - (\mathbb{L}^p)_{ji}^\dagger. \quad (5)$$

Still using the eigenvectors and eigenvalues of \mathbb{L} we have

$$\Omega_{ij}^{(p)} = \sum_{\alpha \geq 2} \frac{(u_{\alpha,i} - u_{\alpha,j})^2}{\lambda_\alpha^p}. \quad (6)$$

One can easily check that $\Omega_{ij}^{(p)}$ is still a graph-theoretic distance metric satisfying the properties mentioned between Eqs. (2) and (3). We finally have generalized resistance centralities [17],

$$C_p(k) = \left[n^{-1} \sum_j \Omega_{kj}^{(p)} \right]^{-1} = \left[\sum_{\alpha \geq 2} \frac{u_{\alpha,k}^2}{\lambda_\alpha^p} + n^{-2} Kf_p \right]^{-1}, \quad (7)$$

and generalized Kirchhoff indices [16],

$$Kf_p = \sum_{i < j} \Omega_{ij}^{(p)} = n \sum_{\alpha \geq 2} \lambda_\alpha^{-p}. \quad (8)$$

We note that generalized resistance distances can in principle be expressed as function of $\Omega_{ij}^{(1)}$. For instance one has

$$Kf_2 = \frac{n}{4} \sum_{i,j} \Omega_{ij}^{(1)2} - \frac{1}{2} \sum_{i,j,k} \Omega_{ij}^{(1)} \Omega_{jk}^{(1)} + \frac{(Kf_1)^2}{n}. \quad (9)$$

Below we show how global robustness and local vulnerabilities quantified with performances measures can be expressed in terms of the resistance distance-based centralities and the generalized Kirchhoff indices just introduced.

III. SYNCHRONIZED OSCILLATORS UNDER EXTERNAL PERTURBATIONS

A. The Kuramoto model with inertia and its linearization

We consider a set of network-coupled oscillators defined by the following set of coupled differential equations,

$$m_i \ddot{\theta}_i + d_i \dot{\theta}_i = P_i - \sum_j b_{ij} \sin(\theta_i - \theta_j). \quad (10)$$

Oscillators labeled $i = 1, \dots, n$ sit on the n nodes of a weighted graph defined by the adjacency matrix with elements $b_{ij} \geq 0$. They have compact angle coordinates $\theta_i \in (-\pi, \pi]$, natural frequencies P_i/d_i [41] and inertia as well as damping parameters m_i and d_i . For $m_i = 0$, Eq. (10) gives the celebrated Kuramoto model on a complex network, for which it is known that when the couplings are sufficiently strong, a finite fraction of, or all oscillators synchronize, i.e., with $\theta_i - \dot{\theta}_j = 0$, depending on the distribution of the natural frequencies [4,19,42,43]. Here, we consider P_i defined on a bounded, real

interval and set $\sum_i P_i = 0$ without loss of generality, so that synchronous states have $\dot{\theta}_i = 0, \forall i$.

Equation (10) is governed by three sets of time scales. The first one consists of the inverse natural frequencies d_i/P_i . The second one is given by ratios m_i/d_i and corresponds to the relaxation time of individual oscillators. Finally, the third one is given by the network relaxation times d_i/λ_α defined by the damping parameters and the eigenvalues λ_α of the weighted Laplacian matrix defined in Eq. (12) below. The first of these sets essentially determines the synchronous state, together with the coupling network. Depending on the other two sets of time scales, perturbations are locally damped or they propagate across the network [16,17,35].

We consider a stable fixed-point solution $\boldsymbol{\theta}^{(0)} = (\theta_1^{(0)}, \dots, \theta_n^{(0)})$ to Eq. (10) with unperturbed natural frequencies $\mathbf{P}^{(0)}$. We subject this state to a time-dependent perturbation $\mathbf{P}(t) = \mathbf{P}^{(0)} + \delta\mathbf{P}(t)$, which renders angles time-dependent, $\boldsymbol{\theta}(t) = \boldsymbol{\theta}^{(0)} + \delta\boldsymbol{\theta}(t)$. Linearizing the dynamics of Eq. (10) about $\boldsymbol{\theta}^{(0)}$, one obtains

$$\mathbf{M} \delta\ddot{\boldsymbol{\theta}} + \mathbf{D} \delta\dot{\boldsymbol{\theta}} = \delta\mathbf{P}(t) - \mathbb{L}(\{\theta_i^{(0)}\}) \delta\boldsymbol{\theta}, \quad (11)$$

where we introduced inertia and damping matrices, $\mathbf{M} = \text{diag}\{m_i\}$ and $\mathbf{D} = \text{diag}\{d_i\}$, respectively, and the weighted Laplacian matrix $\mathbb{L}(\{\theta_i^{(0)}\})$ with matrix elements

$$\mathbb{L}_{ij} = \begin{cases} -b_{ij} \cos(\theta_i^{(0)} - \theta_j^{(0)}), & i \neq j, \\ \sum_k b_{ik} \cos(\theta_i^{(0)} - \theta_k^{(0)}), & i = j. \end{cases} \quad (12)$$

This Laplacian is minus the stability matrix of the linearized dynamics, and since we consider a stable synchronous state, it is positive semidefinite, with a single eigenvalue $\lambda_1 = 0$ with eigenvector $\mathbf{u}_1 = (1, 1, 1, \dots, 1)/\sqrt{n}$, and $\lambda_\alpha > 0, \alpha = 2, 3, \dots, n$. From here on, we order the Lyapunov exponents λ_α in increasing order, i.e., $\lambda_1 = 0 < \lambda_2 < \dots < \lambda_n$.

Equation (11) can be solved analytically through a spectral expansion if (i) both \mathbf{M} and \mathbf{D} commute with \mathbb{L} or (ii) if $\mathbf{M}^{-1}\mathbf{D} = \gamma\mathbb{L}$. In case (i), the spectral expansion is over the eigenmodes of \mathbb{L} , while in case (ii) it is over the eigenmodes of $\mathbf{M}^{-1/2}\mathbb{L}\mathbf{M}^{-1/2}$ [14,38]. Here, we focus on case (i) with $m_i = m, d_i = d \forall i$.

Expanding the angle deviations over the eigenmodes of \mathbb{L} as $\delta\boldsymbol{\theta}(t) = \sum_\alpha c_\alpha(t)\mathbf{u}_\alpha$, Eq. (11) leads to a Langevin equation,

$$m\ddot{c}_\alpha(t) + d\dot{c}_\alpha(t) = \delta\mathbf{P}(t) \cdot \mathbf{u}_\alpha - \lambda_\alpha c_\alpha(t), \quad (13)$$

whose general solution reads

$$c_\alpha(t) = m^{-1} e^{-(\gamma+\Gamma_\alpha)t/2} \int_0^t e^{\Gamma_\alpha t_1} \times \int_0^{t_1} \delta\mathbf{P}(t_2) \cdot \mathbf{u}_\alpha e^{(\gamma-\Gamma_\alpha)t_2/2} dt_2 dt_1, \quad (14)$$

with $\Gamma_\alpha = \sqrt{\gamma^2 - 4\lambda_\alpha/m}$ and $\gamma = d/m$. Similar expressions have been derived using the transfer function formalism [14,44] or within linear response [16,33,45]. When $\gamma^2 < 4\lambda_\alpha/m$, $\Gamma_\alpha \in i\mathbb{R}$, and accordingly, $|\Gamma_\alpha|$ corresponds to the angular frequency of oscillations along the eigenmode \mathbf{u}_α of \mathbb{L} . When, however, $\gamma^2 > 4\lambda_\alpha/m$, $\Gamma_\alpha \in \mathbb{R}$ and gives an additional damping beyond γ . From Eq. (14), angle and

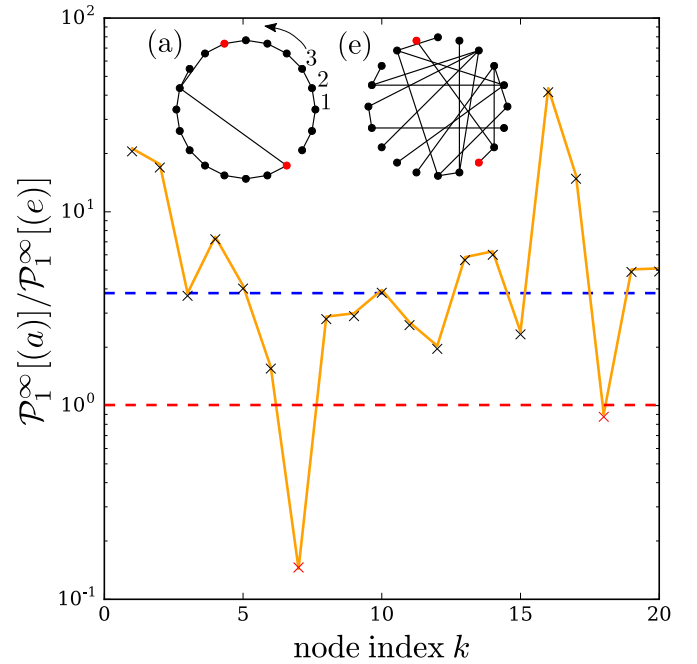


FIG. 1. Ratio of the performance measures \mathcal{P}_1 for graph (a) vs. (e) of Fig. 2 (shown in the insets), for a quench perturbation of magnitude $\delta P_0 = 0.01$ and duration $\gamma\tau_0 = 500$ on node $k = 1, 2, 3, \dots, 20$ (see text). On average, graph (e) is four times more robust to external perturbations than graph (a) (blue dashed line). However, some nodes of graph (a) can be more robust than those of graph (e) (red crosses correspond to quench perturbation applied on the red nodes shown in the inset). Both specific local vulnerabilities (crosses) and global averaged robustness (blue dashed lines) are well predicted by combinations of local centralities, and global topological indices (orange solid line, see text).

frequency deviations can be calculated as $\delta\boldsymbol{\theta}(t) = \sum_\alpha c_\alpha(t)\mathbf{u}_\alpha$. The above described perturbation in the natural frequencies of Eq. (10) models physical disturbances that can occur e.g., when a magnetic field is applied to an array of coupled Josephson junctions [2] or when the injected or consumed powers change in a high-voltage electric power grid [5].

B. Performance measures

The perturbation $\delta\mathbf{P}(t)$ moves the oscillators angles and frequencies away from their value at synchrony and renders them time dependent. For not too strong, finite-time perturbations, they eventually relax to their synchronous values and to assess the magnitude of the excursion away from synchrony, we introduce the following quadratic performance measures:

$$\mathcal{P}_1(T) = \sum_i \int_0^T |\delta\theta_i(t) - \Delta(t)|^2 dt, \quad (15a)$$

$$\mathcal{P}_2(T) = \sum_i \int_0^T |\delta\dot{\theta}_i(t) - \dot{\Delta}(t)|^2 dt. \quad (15b)$$

Figure 1 shows the ratio between performance measure \mathcal{P}_1 , defined in Eq. (15a), numerically obtained by perturbing each

node of graphs (a) and (e) shown in the inset. Even if the average value of the performance measure is lower for graph (e), the latter can be more strongly sensitive to certain local perturbations. Below we show that specific local vulnerabilities and global averaged robustness are determined by nodal centralities and global topological indices (orange). Similar measures have been discussed in the context of consensus algorithms [11,12], electric power systems [13–15] and coupled oscillators systems [16,17]. The results we are about to present directly connect these performance measures to resistance-distance based centralities and Kirchhoff indices introduced in Sec. II. While similar connections may have been inferred from some of these works (in particular Refs. [14–16]), to the best of our knowledge, it was first unambiguously stated in Ref. [17].

Because synchronous states are defined modulo any homogeneous angle shift, they are unaffected by the transformation $\theta_i^{(0)} \rightarrow \theta_i^{(0)} + C$. Accordingly, only angle shifts with $\sum_i \delta\theta_i(t) = 0$ matter, which is incorporated in the definitions of $\mathcal{P}_{1,2}$ by subtracting averages $\Delta(t) = n^{-1} \sum_j \delta\theta_j(t)$ and $\dot{\Delta}(t) = n^{-1} \sum_j \dot{\delta\theta}_j(t)$. If the perturbation is not too strong and finite in time, both \mathcal{P}_1 and \mathcal{P}_2 are finite even for $T \rightarrow \infty$. Low values for $\mathcal{P}_{1,2}^\infty \equiv \mathcal{P}_{1,2}(T \rightarrow \infty)$ indicate then that the system absorbs the perturbation with little fluctuations, while large values indicate a temporary fragmentation of the system into independent pieces—qualitatively speaking, $\mathcal{P}_{1,2}^\infty$ measures the coherence of the synchronous state [11].

Using the spectral expansion with coefficients given in Eq. (14), the performance measures of Eqs. (15) read, in our case of homogeneous inertia and damping coefficients,

$$\mathcal{P}_1(T) = \sum_{\alpha \geq 2} \int_0^T c_\alpha^2(t) dt, \quad (16a)$$

$$\mathcal{P}_2(T) = \sum_{\alpha \geq 2} \int_0^T \dot{c}_\alpha^2(t) dt. \quad (16b)$$

Performance measures depend on the perturbation vector $\delta\mathbf{P}(t) = \delta\mathbf{P}_0 f(t)$, which may have different time dependencies $f(t)$ —such as, for instance, noisy fluctuations or instantaneous, Dirac- δ perturbations—and different geographical dependences encoded in $\delta\mathbf{P}_0$. In this manuscript we consider quenches where $f(t)$ vanishes outside some time interval, inside which it is constant but nonzero. In the next section we calculate performance measures for general perturbation vectors $\delta\mathbf{P}_0$ for such quenches. As for geographical dependences, we then consider two cases of (i) nodal vulnerabilities, with local perturbations $\delta\mathbf{P}_0 = (0, \dots, \delta P_{0,k}, \dots, 0)$ and (ii) global robustness, where performance measures are averaged over all possible locations k for the perturbation.

C. Quench perturbation

We compute both performance measures $\mathcal{P}_{1,2}$ for a quench perturbation $\delta\mathbf{P}(t) = \delta\mathbf{P}_0 \Theta(t) \Theta(\tau_0 - t)$ with the Heaviside function $\Theta(t)$ and a perturbation vector $\delta\mathbf{P}_0$ encoding the geographical distribution of the perturbation. The duration τ_0 of the quench allows to explore the different time scales of

the system and we show below that $\mathcal{P}_{1,2}$ varies significantly depending on τ_0 . Using Eqs. (14) and (15) give

$$\mathcal{P}_1^\infty = \frac{m}{8\gamma} \sum_{\alpha \geq 2} \frac{(\delta\mathbf{P}_0 \cdot \mathbf{u}_\alpha)^2}{\Gamma_\alpha \lambda_\alpha^3} \left[2\Gamma_\alpha (4\gamma\tau_0\lambda_\alpha/m - 3\gamma^2 - \Gamma_\alpha^2) + (\gamma + \Gamma_\alpha)^3 e^{-\tau_0(\frac{\gamma-\Gamma_\alpha}{2})} - (\gamma - \Gamma_\alpha)^3 e^{-\tau_0(\frac{\gamma+\Gamma_\alpha}{2})} \right], \quad (17a)$$

$$\mathcal{P}_2^\infty = \frac{1}{2d} \sum_{\alpha \geq 2} \frac{(\delta\mathbf{P}_0 \cdot \mathbf{u}_\alpha)^2}{\Gamma_\alpha \lambda_\alpha} \left[2\Gamma_\alpha - (\gamma + \Gamma_\alpha) e^{-\frac{\tau_0(\gamma-\Gamma_\alpha)}{2}} + (\gamma - \Gamma_\alpha) e^{-\frac{\tau_0(\gamma+\Gamma_\alpha)}{2}} \right]. \quad (17b)$$

It is easily checked that $\mathcal{P}_{1,2}^\infty \in \mathbb{R}$ in both cases $\gamma^2 > 4\lambda_\alpha/m$ (with $\Gamma_\alpha \in \mathbb{R}$) and $\gamma^2 < 4\lambda_\alpha/m$ (with $\Gamma_\alpha \in i\mathbb{R}$).

Both performance measures are given by a spectral sum of terms corresponding to the eigenmodes of the network Laplacian matrix \mathbb{L} . Each term in this sum depends on the scalar product of the perturbation vector $\delta\mathbf{P}_0$ with the eigenmodes \mathbf{u}_α of \mathbb{L} times a mode-dependent factor. The latter is an almost always decreasing function of the eigenvalues λ_α . Therefore, Eqs. (17) suggest that the largest excursion can be obtained by overlapping $\delta\mathbf{P}_0$ with few of the lowest-lying eigenmodes of \mathbb{L} , in particular, \mathbf{u}_2 , the so-called Fiedler mode of the network [46].

To get more insight into Eqs. (17), we compute their two asymptotic limits of long and short τ_0 . For perturbations with very short duration, i.e., $\tau_0 \ll m/d$, $(\gamma \pm \Gamma_\alpha)^{-1}$, we have

$$\mathcal{P}_1^\infty = \frac{\tau_0^2}{2d} \sum_{\alpha \geq 2} \frac{(\delta\mathbf{P}_0 \cdot \mathbf{u}_\alpha)^2}{\lambda_\alpha}, \quad (18a)$$

$$\mathcal{P}_2^\infty = \frac{\tau_0^2}{2md} \sum_{\alpha \geq 2} (\delta\mathbf{P}_0 \cdot \mathbf{u}_\alpha)^2. \quad (18b)$$

Each term in the sum over modes depends on λ_α for \mathcal{P}_1^∞ but not for \mathcal{P}_2^∞ . Consequently, \mathcal{P}_1^∞ depends explicitly on the location of the perturbation, while there is no such dependence for \mathcal{P}_2^∞ , which depends only on the squared norm of the perturbation vector $\delta\mathbf{P}_0$ orthogonal to \mathbf{u}_1 . This reflects the fact that in the regime of short τ_0 , the perturbation does not act long enough to change the kinetic energy of inertiaful oscillators, which \mathcal{P}_2^∞ essentially measures. Consequently, the perturbation is quickly damped locally, with little dependence on its location in the situation we consider of homogeneously distributed inertia. We note that similar topology-independent results were obtained for instantaneous, Dirac- δ perturbations [47].

In the other limit $\tau_0 \gg m/d$, $(\gamma \pm \Gamma_\alpha)^{-1}$, the performance measures read

$$\mathcal{P}_1^\infty = \tau_0 \sum_{\alpha \geq 2} \frac{(\delta\mathbf{P}_0 \cdot \mathbf{u}_\alpha)^2}{\lambda_\alpha^2}, \quad (19a)$$

$$\mathcal{P}_2^\infty = d^{-1} \sum_{\alpha \geq 2} \frac{(\delta\mathbf{P}_0 \cdot \mathbf{u}_\alpha)^2}{\lambda_\alpha}. \quad (19b)$$

In this case of a long-lasting perturbation, both \mathcal{P}_1^∞ and \mathcal{P}_2^∞ depend on the location of the perturbation. Furthermore, and perhaps more importantly, the inertia affects neither \mathcal{P}_1^∞ nor \mathcal{P}_2^∞ . This is so since, for long quenches, oscillators have the

time to synchronize at a new frequency with zero angular acceleration before the perturbation is over. We further note that τ_0 no longer appears in \mathcal{P}_2^∞ , since the latter considers deviations orthogonal to \mathbf{u}_1 . Consequently, the whole time spent by the oscillators at the new frequency does not contribute to \mathcal{P}_2^∞ . Most importantly, Eqs. (18) and (19) suggest that in both asymptotic limits of short and long perturbations, $\mathcal{P}_{1,2}^\infty \propto \sum_{\alpha \geq 2} (\delta \mathbf{P}_0 \cdot \mathbf{u}_\alpha)^2 / \lambda_\alpha^p$ with $p = 0, 1, 2$. That result was already hinted at in Ref. [16] for inertialess oscillators and various types of perturbations. Below we show how this dependence leads to performance measures depending on the resistance distances, centralities and Kirchhoff indices introduced in Sec. II.

Eqs. (17) and their asymptotic limits, Eqs. (18) and (19), give the performance measures $\mathcal{P}_{1,2}^\infty$ for any perturbation vector $\delta \mathbf{P}_0$. We next discuss two important cases of (i) a single-node perturbation, $\delta P_{0,i} = \delta P_0 \delta_{ik}$, where large values of the node-dependent performance measures $\mathcal{P}_{1,2}^\infty \rightarrow \mathcal{P}_{1,2}^\infty(k)$ identify local vulnerabilities and (ii) averaged perturbation over ensemble of homogeneously distributed perturbation vectors $\delta \mathbf{P}_0$, where large values of $\mathcal{P}_{1,2}^\infty \rightarrow \langle \mathcal{P}_{1,2}^\infty \rangle$ indicate globally fragile networks.

D. Specific local vulnerabilities

To assess local vulnerabilities of the coupled oscillators, we apply a quench perturbation on a single node. The vulnerability of node k is then given by Eqs. (17) with the components of the perturbation vector given by $\delta P_{0,i} = \delta P_0 \delta_{ik}$. In the limit of short duration of perturbation, $\tau_0 \ll m/d$, $(\gamma \pm \Gamma_\alpha)^{-1}$, one obtains

$$\mathcal{P}_1^\infty(k) = \frac{\delta P_0^2 \tau_0^2}{2d} \sum_{\alpha \geq 2} \frac{u_{\alpha,k}^2}{\lambda_\alpha} = \frac{\delta P_0^2 \tau_0^2}{2d} [C_1^{-1}(k) - n^{-2} Kf_1], \quad (20a)$$

$$\mathcal{P}_2^\infty(k) = \frac{\delta P_0^2 \tau_0^2}{2md} \sum_{\alpha \geq 2} u_{\alpha,k}^2 = \frac{\delta P_0^2 \tau_0^2}{2md} \frac{(n-1)}{n}, \quad (20b)$$

where the right-hand side of Eq. (20a) directly follows from Eq. (3). For a perturbation on node k , $\mathcal{P}_1^\infty(k)$ is expressed in terms of the centrality, $C_1(k)$, a local nodal descriptor, and the Kirchhoff index Kf_1 , a global network descriptor. Consequently, the most vulnerable nodes in a given network, according to $\mathcal{P}_1^\infty(k)$, are identified by their resistance-distance based centrality $C_1(k)$.

In the other limit of long perturbations, $\tau_0 \gg m/d$, $(\gamma \pm \Gamma_\alpha)^{-1}$, Eqs. (19) give

$$\mathcal{P}_1^\infty(k) = \delta P_0^2 \tau_0 \sum_{\alpha \geq 2} \frac{u_{\alpha,k}^2}{\lambda_\alpha^2} = \delta P_0^2 \tau_0 [C_2^{-1}(k) - n^{-2} Kf_2], \quad (21a)$$

$$\mathcal{P}_2^\infty(k) = \frac{\delta P_0^2}{d} \sum_{\alpha \geq 2} \frac{u_{\alpha,k}^2}{\lambda_\alpha} = \frac{\delta P_0^2}{d} [C_1^{-1}(k) - n^{-2} Kf_1]. \quad (21b)$$

This time \mathcal{P}_1^∞ is given by the higher order centrality $C_2(k)$ and Kirchhoff index Kf_2 .

When considering a given, fixed network, Eqs. (20) and (21) show that perturbations on the most central nodes— as measured by either centrality $C_1(k)$ or $C_2(k)$ —give the

smallest overall responses, except when considering $\mathcal{P}_2^\infty(k)$ for a short-time perturbation. In that latter case, the response is homogeneous and perturbing any node leads to the same performance measure $\mathcal{P}_2^\infty(k)$. When comparing two nodes with similar centrality on two different networks, however, Eqs. (20) and (21) indicate that the largest response occurs on the network with smallest generalized Kirchhoff index – except again for $\mathcal{P}_2^\infty(k)$ and a short-time perturbation. We show below that the overall network robustness is actually given by these generalized Kirchhoff indices, which makes this observation quite counterintuitive: When perturbing two nodes of equal centrality on two different networks, the largest response is actually recorded on the overall more robust network! We will come back to this point below.

E. Averaged global robustness

We next assess the global robustness of synchrony in a given network, by averaging Eqs. (17) over an homogeneously distributed ensemble of perturbation vectors defined by $\langle \delta P_{0,i} \delta P_{0,j} \rangle = \delta_{ij} \langle \delta P_0^2 \rangle$ [16]. Averaging Eqs. (17) gives, in the limit of short perturbations, $\tau_0 \ll m/d$, $(\gamma \pm \Gamma_\alpha)^{-1}$,

$$\langle \mathcal{P}_1^\infty \rangle = \frac{\langle \delta P_0^2 \rangle \tau_0^2}{2d} \sum_{\alpha \geq 2} \lambda_\alpha^{-1} = \frac{\langle \delta P_0^2 \rangle \tau_0^2}{2nd} Kf_1, \quad (22a)$$

$$\langle \mathcal{P}_2^\infty \rangle = \frac{\langle \delta P_0^2 \rangle \tau_0^2}{2md} \frac{n-1}{n}. \quad (22b)$$

We see that $\langle \mathcal{P}_1^\infty \rangle$ is given by the Kirchhoff index Kf_1 which is proportional to the network's average resistance distance $\Omega_{ij}^{(1)}$ [see Eq. (4)]. Similarly to the local vulnerability in this limit, $\langle \mathcal{P}_2^\infty \rangle$ depends on the network only marginally through the number of nodes.

In the other limit $\tau_0 \gg m/d$, $(\gamma \pm \Gamma_\alpha)^{-1}$, Eqs. (19) give

$$\langle \mathcal{P}_1^\infty \rangle = \langle \delta P_0^2 \rangle \tau_0 \sum_{\alpha \geq 2} \lambda_\alpha^{-2} = \frac{\langle \delta P_0^2 \rangle \tau_0}{n} Kf_2, \quad (23a)$$

$$\langle \mathcal{P}_2^\infty \rangle = \frac{\langle \delta P_0^2 \rangle}{d} \sum_{\alpha \geq 2} \lambda_\alpha^{-1} = \frac{\langle \delta P_0^2 \rangle}{nd} Kf_1. \quad (23b)$$

Both performance measures depend on generalized Kirchhoff indices. Quite remarkably and as for local vulnerabilities, the only average performance measure that depends on inertia is $\langle \mathcal{P}_2^\infty \rangle$ in the short τ_0 limit.

The results of Secs. III D and III E can be easily extended to other types of perturbations. For inertialess oscillators, Ref. [16] reached similar conclusions, that performance measures can be expressed in terms of resistance centralities and Kirchhoff indices, for several other types of perturbations. In the next section, we numerically confirm the validity of the analytical theory presented in this section.

IV. NUMERICAL RESULTS

A. Local vulnerabilities and resistance centralities

We numerically investigate local vulnerabilities by perturbing individual nodes with the quench perturbation discussed above. Our theory applies to network of any geometry with any number n of nodes. However, to better visualize the

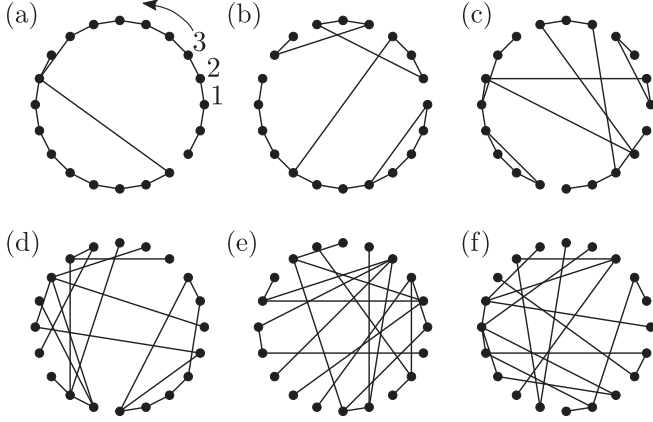


FIG. 2. Six networks with $n = 20$ nodes obtained by the rewiring procedure of Ref. [48], starting from a cyclic graph and rewiring every edge of the network with a probability $p = 0.15$ (a), $p = 0.3$ (b), $p = 0.45$ (c), $p = 0.6$ (d), $p = 0.75$ (e), and $p = 0.9$ (f). The node numbering used in Fig. 3 is indicated in panel (a).

agreement between analytical predictions and numerical results we restrict ourselves to relatively small graphs with $n = 20$ nodes of the kind shown in Fig. 2.

We check Eqs. (17) for the model defined in Eq. (10) with $b_{ij} = 1$ on the edge of the graph considered and $b_{ij} = 0$ otherwise, $m_i \equiv m = 1$ and $d_i \equiv d = 1$. We numerically time-evolve Eq. (10) with a fourth-order Runge-Kutta method, following a perturbation $\delta P_i(t) = \delta P_0 \delta_{ik} \Theta(t) \Theta(\tau_0 - t)$ away from $\mathbf{P}^{(0)} = 0$ and starting from the corresponding synchronous state $\boldsymbol{\theta}^{(0)} = 0$. Figure 3 shows that the theory of Eqs. (17) is in perfect agreement with numerical results. In particular, one clearly sees the crossover from $[C_1^{-1}(k) - n^{-2}Kf_1]$ to $[C_2^{-1}(k) - n^{-2}Kf_2]$ for \mathcal{P}_1^∞ (dotted to dashed lines on the left panels) and from a constant to $[C_1^{-1}(k) - n^{-2}Kf_1]$ (dotted to dashed line on the right panels) for \mathcal{P}_2^∞ , as τ_0 increases. This fully confirms our theoretical predictions, Eqs. (20) and (21). We conclude that, generally speaking (i.e., except for \mathcal{P}_2^∞ and short perturbations), the most central nodes are the most robust. They are connected by multiple paths to the rest of the network, and when they are perturbed, the disturbance quickly diffuses across the network with small angle differences. In contrast, the most peripheral nodes such as dead ends have only few paths connecting them to the bulk of the network and the disturbance diffuses across the network with large angle differences. It has been numerically found that dead ends undermine grid stability [49], and our results shed some analytical light on that observation.

We further illustrate this strong connection between resistance centralities and response of the system. We show in Fig. 4 resistance centralities $C_1(k)$ and $C_2(k)$ for the six graphs of Fig. 2. One sees that $C_1(k)$ and $C_2(k)$ tend to become higher while going from graph (a) to (f) indicating that graphs with more rewired edges (and thus with more long-range couplings) have shorter distances between nodes and thus lower Kirchhoff indices. Interestingly, several nodes with a high centrality $C_1(k)$ do not necessarily have a high centrality $C_2(k)$, and vice-versa. This is illustrated in the $C_1(k)$ versus $C_2(k)$ scatterplot of Fig. 5.

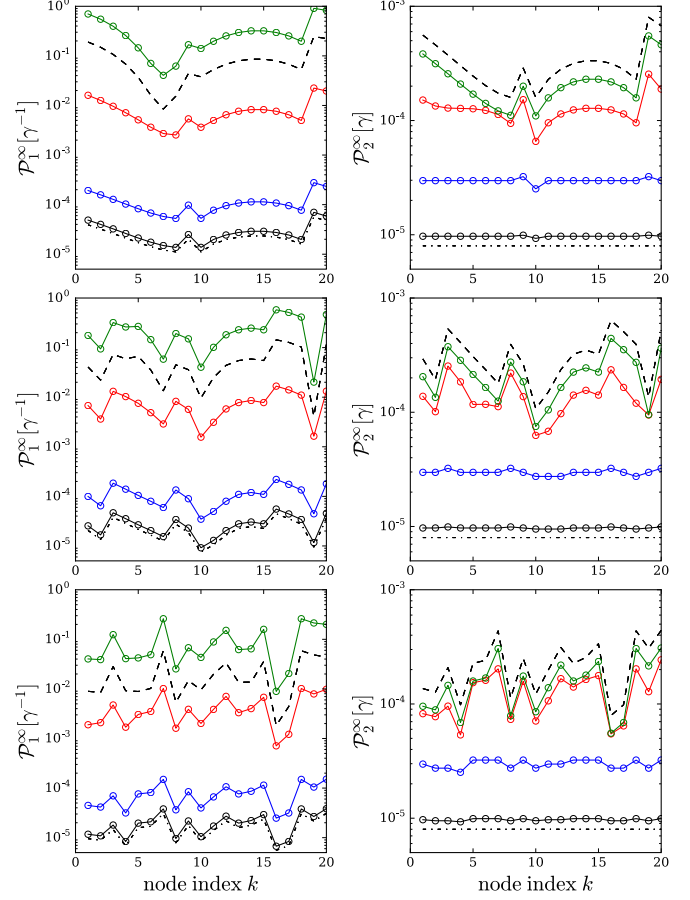


FIG. 3. Performances measures \mathcal{P}_1 (left) and \mathcal{P}_2 (right) for the graphs of Fig. 2(a) (top), Fig. 2(c) (middle), Fig. 2(e) (bottom), and a quench perturbation of magnitude $\delta P_0 = 0.01$ on node k . Numerical results (circles) and analytical Eqs. (17) (solid lines) are plotted for different durations of perturbation $\gamma \tau_0 = 0.5$ (black), 1 (blue), 10 (red), 100 (green). The asymptotic values of short and long τ_0 given in Eqs. (20) (dotted line) and (21) (dashed line) are shown, vertically shifted by an arbitrary amount for clarity. The node numbering is given in Fig. 2(a).

Still there is an overall positive correlation between $C_1(k)$ versus $C_2(k)$, quantified by a Pearson correlation parameter $\text{cov}[C_1(k), C_2(k)]/(\text{rms}[C_1(k)]\text{rms}[C_2(k)]) = 0.87$. We then show in Fig. 6 the time-evolution of angles and frequencies following a local quench perturbation on two different nodes of graph (f) with very different resistance centralities. One clearly sees that for a perturbed node with low resistance centrality (Fig. 6, top), angles and frequencies spread more during the perturbation than for a node with higher centrality (Fig. 6, bottom).

Generally speaking, networks with higher rewiring probabilities have smaller global topological indices Kf_1 and Kf_2 and thus smaller $\langle \mathcal{P}_{1,2}^\infty \rangle$ according to our theory. This is confirmed numerically in the four left panels in Fig. 7, where we apply the same quench perturbation on nodes with resistance centralities $C_1(k)$ close to their median value in the corresponding graph. One observes that angles and frequencies spread more and take more time to return to the initial fixed point in the graph with higher Kf_1 and Kf_2 (top) compared to the one with more rewired edges (bottom).

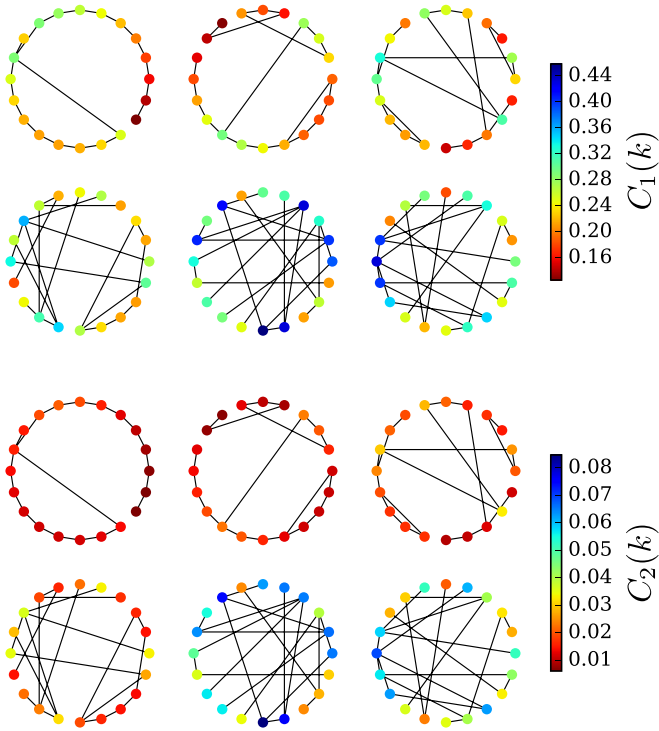


FIG. 4. Resistance centralities $C_1(k)$ (top) and $C_2(k)$ (bottom), given in Eqs. (3) and (7), respectively, for the six graphs of Fig. 2.

While this is a rather general rule, it does not forbid exceptions. As a matter of fact, specific perturbations can lead to higher response in a network with lower Kirchhoff index than in a network with higher Kirchhoff index. Such an exception is illustrated in the four right panels in Fig. 7, where the same quench perturbation is applied on nodes with similar resistance centralities $C_2(k)$ but belonging to graphs with very different Kirchhoff indices (see insets of Fig. 7). As

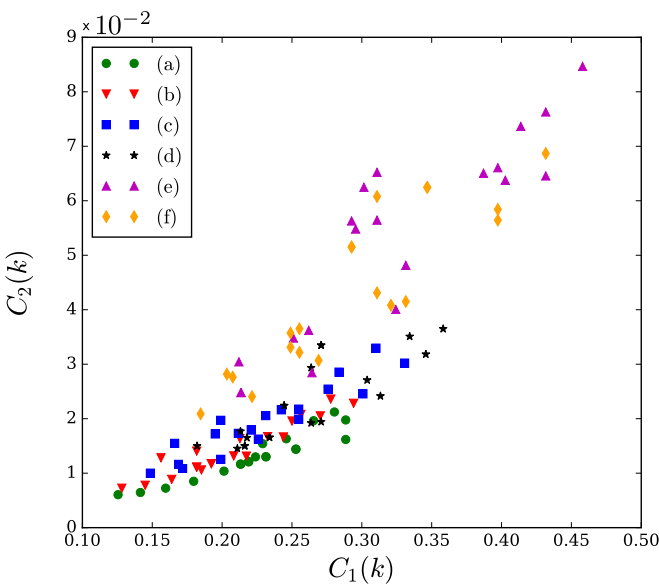


FIG. 5. Comparison between $C_1(k)$ and $C_2(k)$ for the six graphs of Fig. 2 (see inset).

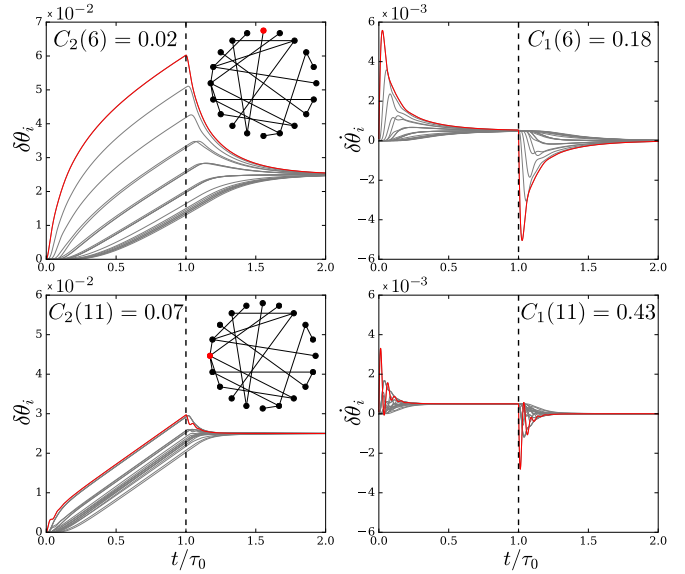


FIG. 6. Time-evolution of angles (left) and frequencies (right) following a quench perturbation applied on node 6 (top panels) and 11 (bottom panels) of graph (f) in Fig. 2 with $\gamma \tau_0 = 50$. The trajectory of the perturbed oscillator is shown in red. Angles and frequencies spread more when the perturbation is applied on node 6 than on node 11, in agreement with predictions of Eqs. (21) since node 6 has the smallest, node 11 the largest centrality in this graph.

expected from Eqs. (21), if two nodes on different networks have the same centralities, then a perturbation applied on the one in the network with lower Kirchhoff index produces the largest response. Another illustration of this effect is given in Fig. 1, where graph (e) is more robust than graph (a) on average (dashed lines). But if we compare the response to specific local perturbations, some nodes of graph (a) are more robust than those of graph (e) (red crosses). Both the generic and the exceptional behaviors are accurately captured by our theory.

B. Global robustness and generalized Kirchhoff indices

We next investigate global robustness by averaging performance measures over an ensemble of perturbation vectors located on a single node, $\delta P_0 = (0, \dots, \delta P_{0,k}, 0, \dots)$ with $k = 1, \dots, n$. Figure 8 compares the resulting numerical averages $\langle \mathcal{P}_{1,2}^\infty \rangle$ with the average of the theoretical prediction of Eqs. (17). Numerics and theory agree well. In particular the left panel confirms nicely the crossover between Kf_1 and Kf_2 predicted by Eqs. (22a) and (23a). A similar behavior is visible in the right panel, where $\langle \mathcal{P}_2^\infty \rangle$ does not depend on the network topology for short duration of perturbation (black and blue lines and symbols) but crosses over to Kf_1 as τ_0 increases, as predicted by Eqs. (22b) and (23b). We finally note that networks with high Kf_1 do not necessarily have a high Kf_2 , and vice-versa. This is illustrated in Fig. 8 where the chosen network with $p = 0.15$ has a higher Kf_2 but a lower Kf_1 than the chosen network with $p = 0.3$. Below we analyze in more details $Kf_{1,2}$ in randomly rewired networks.

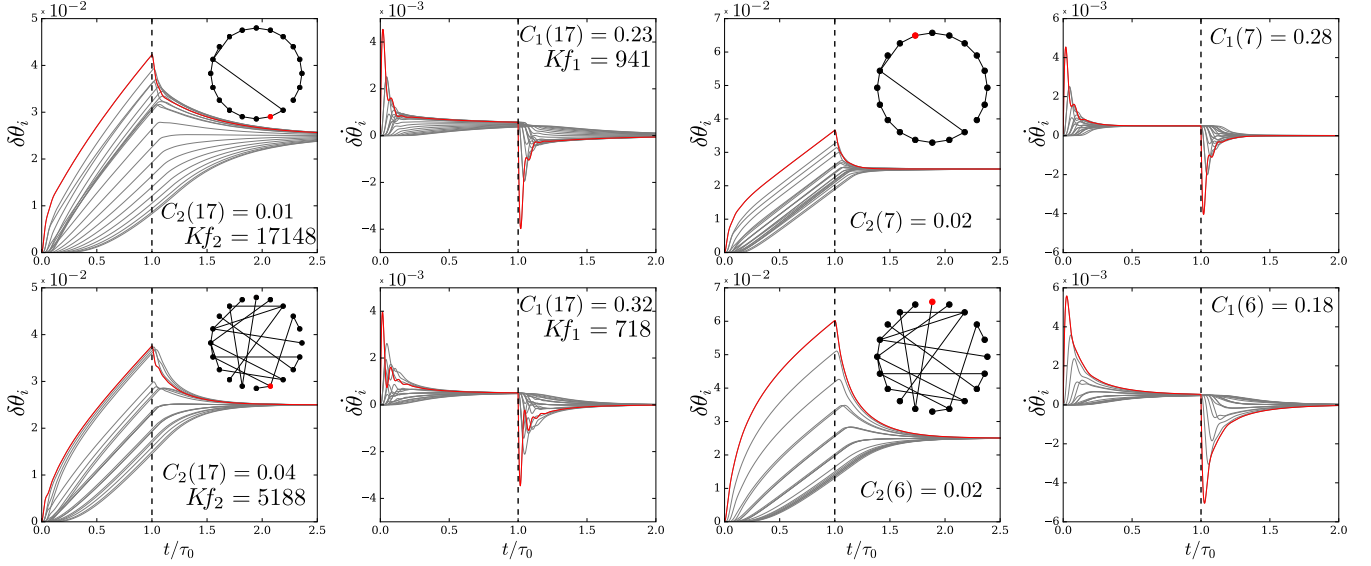


FIG. 7. Trajectories of angles and phases for the graphs of Fig. 2 with $p = 0.15$ (top) and $p = 0.9$ (bottom) obtained by numerically time-evolving Eq. (10) for the same quench perturbation with $\gamma\tau_0 = 50$ applied on the node colored in red in the insets. In the four left panels, perturbed nodes are close to median value of $C_2(k)$, respectively, in graph with $p = 0.15$ (top) and $p = 0.9$ (bottom). In the four right panels, perturbed nodes are the most (top) and least (bottom) central ones according to $C_2(k)$, respectively, in graph with $p = 0.15$ and $p = 0.9$.

C. Generalized Kirchhoff indices in small-world networks

The results obtained above relate local vulnerabilities to nodal centralities and global network robustness to generalized Kirchhoff indices. This connection is powerful: it gives a vulnerability ranking of nodes and provides robustness assessment based on well-defined, easily calculated network descriptors. To gain qualitative insight on what favors robustness in a graph, we investigate the behavior of the Kirchhoff indices for Watts-Strogatz, randomly rewired networks. Following Ref. [48], we consider initially regular, circular graphs where nodes are coupled to their nearest, second-nearest, and so on, up to their 10th-nearest neighbors. Each edge in the corresponding coupling network is then rewired with probability p . Figure 9 compares the standard measures of “nearest-neighborhoodness” of average geodesic distance l and clustering

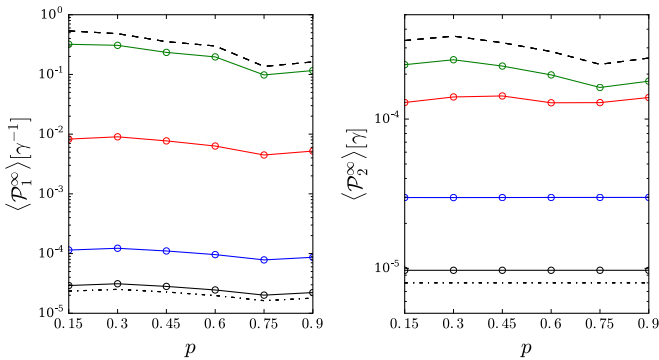


FIG. 8. Averaged performances measures $\langle \mathcal{P}_1^\infty \rangle$, $\langle \mathcal{P}_2^\infty \rangle$ for the graphs of Fig. 2 obtained numerically (circles) and predicted analytically, Eqs. (17) (solid lines) for perturbations with $\gamma\tau_0 = 0.5$ (black), 1 (blue), 10 (red), 100 (green). The asymptotic values of short and long τ_0 given in Eqs. (22) (dotted line) and (23) (dashed line) are shown, vertically shifted by an arbitrary amount for clarity.

coefficient Cl with the generalized Kirchhoff indices Kf_1 and Kf_2 , as a function of p .

Both Kirchhoff indices drop, roughly following l , as p is increased, with Kf_2 decreasing significantly faster than Kf_1 and l . Traditionally, the “small-world” behavior occurs around $p = 0.01$, where l is significantly smaller than its initial value, while Cl has not yet changed much. In that region, Kf_1 has been reduced to $\sim 40\%$ of its initial value, while Kf_2

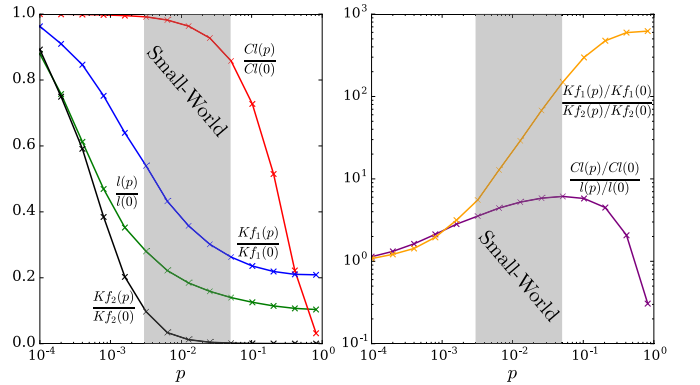


FIG. 9. Left panel: clustering coefficient Cl , average geodesic distance l and generalized Kirchhoff indices Kf_1 and Kf_2 , as a function of the rewiring probability p for Strogatz-Watts rewired networks [48]. Each data point corresponds to an average over 30 realizations of randomly rewired graphs, obtained from an initial cyclic graph with $n = 1000$ nodes and nearest to 10th-nearest neighbor coupling, where each edge is randomly rewired with a probability p (parameters chosen similar as in Ref. [48], such that the graph remains connected while rewiring and is still sparse). Right panel: ratio of the Kirchhoff indices and of clustering coefficient vs. average geodesic distance. Small-world network are easily identified by the steepest slope of the orange line.

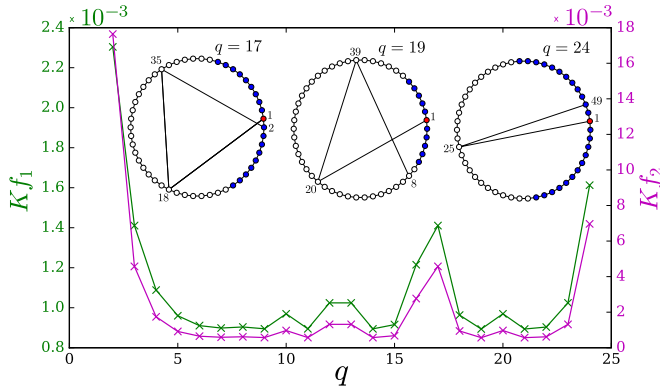


FIG. 10. Generalized Kirchhoff indices Kf_1 (green) and Kf_2 (purple) given in Eq. (25), for a cyclic network with $n = 50$ nodes with nearest and q th-nearest-neighbor coupling. The inset sketches the model for $q = 17, 19,$ and 24 and with one path involving q th range coupling starting from node 1 (red). The addition of the q th-nearest-neighbor coupling does not reduce geodesic distance between the reference node (red) and the set of nodes colored in blue.

reaches only few percents of its initial value. Accordingly, small-world networks are significantly more robust to external perturbations than regular networks, particularly when considering \mathcal{P}_1^∞ for long quenches. Only a fraction of edges need to be rewired to achieve a level of robustness comparable to that of random networks. As a side-remark, we note that the ratio of Kirchhoff indices provides for a clear identification of small-world networks, which correspond to values of p where $Kf_1(p)/Kf_2(p)$ is fast increasing with p .

D. Regular networks

We finally comment on regular networks. In such networks, all the nodes are equivalent and therefore global robustness is equivalent to local vulnerability, $\mathcal{P}_{1,2}^\infty(k) = \langle \mathcal{P}_{1,2}^\infty \rangle, \forall k$, furthermore, Kirchhoff indices can be calculated analytically. The Laplacian matrix can be diagonalized with a Fourier transform, and its spectrum is given by

$$\lambda_\alpha = 4 - 2 \cos(k_\alpha) - 2 \cos(k_\alpha q), \alpha = 1, \dots, n, \quad (24)$$

with $k_\alpha = 2\pi(\alpha - 1)/n$. Kirchhoff indices Eq. (8) are then given by

$$Kf_p = n \sum_{\alpha \geq 2} [4 - 2 \cos(k_\alpha) - 2 \cos(k_\alpha q)]^{-p}. \quad (25)$$

Figure 10 shows Kf_1 and Kf_2 for such regular networks with $n = 50$ nodes. When extending the coupling range q , Kirchhoff indices are generally decreasing, indicating the standard trend that longer-range couplings reduce centralities. However, for some values $q = 10, 17, 24$ equal or close to integer divisors of n , Kirchhoff indices suddenly become larger. This is so, since then, paths made of few long-range interactions form either closed or almost closed loops (see the inset of Fig. 10 for $q = 17, 24$), which do not reduce the geodesic distance between many pairs of nodes, compared to long range coupling with n/q not integer (e.g., $q = 19$ in

Fig. 10). Consequently, graphs that may appear similar, such as those with $q = 17$ and $q = 19$ or with $q = 23$ and $q = 24$ may exhibit Kirchhoff indices differing by factors of 2–4 or even more. This illustrates how assessing global robustness is hard to do from a network’s general appearance and/or from arguments solely based on the existence of long-range couplings.

V. CONCLUSION

Building up on earlier works [11–17], we have investigated the response under external perturbations of network-coupled dynamical systems initially in a stable synchronous state. We proposed to assess network robustness and identify nodal vulnerabilities through quadratic performance metrics quantifying the magnitude of the perturbation-induced transient excursion away from the synchronous state. As we reported earlier for first-order oscillators [16], we found that the response of inertiaful, second-order oscillators depends on the overlap between the perturbation vector and the eigenmodes of the weighted Laplacian. In particular, the set of nodes located on the slowest eigenmode corresponding to the smallest eigenvalue produces the largest excursions when perturbed. Considering disturbances localized on a single node we found that, oscillators which, once perturbed, induce the largest transient excursion are the ones with smallest resistance centralities. Extending the results of Ref. [16] to second-order oscillators, we found that global robustness, assessed by averaging performance measures over ergodic ensembles of perturbation vectors, is also given by generalized Kirchhoff indices. A network can then be made more robust to perturbations by minimizing its average resistance distances, for instance by introducing long-range edges. Quite remarkably, except for \mathcal{P}_2 and short time perturbation, asymptotic behaviors of performance measures in either limit of long or short perturbations do not depend on the inertia of the oscillators.

Our findings are rather general. Together with Refs. [16,17], they make it clear that, almost regardless of the presence of inertia, and of the type of perturbation chosen, quadratic performance measures are given by the generalized resistance distance-based centralities or, once averaged over ergodic ensembles of perturbations, by the generalized Kirchhoff indices that we introduced in Sec. II. These local and global network characteristics therefore provide well-defined, numerically easy to calculate robustness descriptors and local vulnerability indicators.

Further studies could consider the effect of spatially correlated perturbations and go beyond the assumption of homogeneous inertia and damping. Moreover, generalized resistance centralities and Kirchhoff indices could be investigated with different network generating algorithms.

ACKNOWLEDGMENT

This work has been supported by the Swiss National Science Foundation under Grants No. PYAPP2_154275 and No. 200020_182050.

- [1] F. A. Rodrigues, T. K. D. Peron, P. Ji, and J. Kurths, *Phys. Rep.* **610**, 1 (2016).
- [2] K. Wiesenfeld, P. Colet, and S. H. Strogatz, *Phys. Rev. E* **57**, 1563 (1998).
- [3] Y. Kuramoto, *Chemical Oscillations, Waves, and Turbulence*, Springer Series in Synergetics, Vol. 19 (Springer, Berlin, 1984).
- [4] Y. Kuramoto, in *Proceedings of the International Symposium on Mathematical Problems in Theoretical Physics, Lecture Notes in Physics*, Vol. 39, edited by H. Araki (Springer, Berlin, 1975).
- [5] A. R. Bergen and D. J. Hill, *IEEE Trans. Power Appar. Syst.* **PAS-100**, 25 (1981).
- [6] T. Stankovski, T. Pereira, P. V. E. McClintock, and A. Stefanovska, *Rev. Mod. Phys.* **89**, 045001 (2017).
- [7] A.-L. Barabási, *Network Science* (Cambridge University Press, Cambridge, UK, 2016).
- [8] S. Borgatti, *Comput. Math. Organiz. Theor.* **12**, 21 (2006).
- [9] P. Boldi and S. Vigna, *Internet Math.* **10**, 222 (2014).
- [10] P. Hines, E. Cotilla-Sanchez, and S. Blumsack, *Chaos* **20**, 033122 (2010).
- [11] B. Bamieh, M. R. Jovanovic, P. Mitra, and S. Patterson, *IEEE Trans. Autom. Control* **57**, 2235 (2012).
- [12] T. W. Grunberg and D. F. Gayme, *IEEE Trans. Control Netw. Syst.* **5**, 456 (2018).
- [13] B. K. Poolla, S. Bolognani, and F. Dörfler, *IEEE Trans. Autom. Control* **62**, 6209 (2017).
- [14] F. Paganini and E. Mallada, in *Proceedings of the 55th Annual Allerton Conference on Communication, Control, and Computing (Allerton), Monticello, IL, USA* (IEEE, Piscataway NJ, 2017), pp. 324–331.
- [15] M. Siami and N. Motee, *IEEE Trans. Autom. Control* **61**, 4055 (2016).
- [16] M. Tyloo, T. Coletta, and P. Jacquod, *Phys. Rev. Lett.* **120**, 084101 (2018).
- [17] M. Tyloo, L. Pagnier, and P. Jacquod, [arXiv:1810.09694](https://arxiv.org/abs/1810.09694) [Sci. Advances (to be published)].
- [18] S. H. Strogatz, *Sync: The Emerging Science of Spontaneous Order*, Penguin Press Science Series (Penguin Adult, London, 2004).
- [19] A. Pikovsky, M. Rosenblum, and J. Kurths, *Synchronization: A Universal Concept in Nonlinear Sciences* (Cambridge University Press, Cambridge, 2003).
- [20] L. M. Pecora and T. L. Carroll, *Phys. Rev. Lett.* **80**, 2109 (1998).
- [21] M. Barahona and L. M. Pecora, *Phys. Rev. Lett.* **89**, 054101 (2002).
- [22] M. Chavez, D.-U. Hwang, A. Amann, H. G. E. Hentschel, and S. Boccaletti, *Phys. Rev. Lett.* **94**, 218701 (2005).
- [23] C. Zhou, A. E. Motter, and J. Kurths, *Phys. Rev. Lett.* **96**, 034101 (2006).
- [24] D. A. Wiley, S. H. Strogatz, and M. Girvan, *Chaos* **16**, 015103 (2006).
- [25] P. J. Menck, J. Heitzig, N. Marwan, and J. Kurths, *Nat. Phys.* **9**, 89 (2013).
- [26] R. Delabays, M. Tyloo, and P. Jacquod, *Chaos* **27**, 103109 (2017).
- [27] L. DeVille, *Nonlinearity* **25**, 1473 (2012).
- [28] J. Hindes and I. B. Schwartz, *Phys. Rev. Lett.* **117**, 028302 (2016).
- [29] B. Schäfer, M. Matthiae, X. Zhang, M. Rohden, M. Timme, and D. Witthaut, *Phys. Rev. E* **95**, 060203(R) (2017).
- [30] J. Hindes and I. B. Schwartz, *Chaos* **28**, 071106 (2018).
- [31] M. Tyloo, R. Delabays, and P. Jacquod, *Phys. Rev. E* **99**, 062213 (2019).
- [32] J. Hindes, P. Jacquod, and I. B. Schwartz, [arXiv:1904.12174](https://arxiv.org/abs/1904.12174) (2019).
- [33] S. Kettemann, *Phys. Rev. E* **94**, 062311 (2016).
- [34] J. Wolter, B. Lünsmann, X. Zhang, M. Schröder, and M. Timme, *Chaos* **28**, 063122 (2018).
- [35] L. Pagnier and P. Jacquod, *PLoS ONE* **14**, 1 (2019).
- [36] T. Coletta, R. Delabays, I. Adagideli, and P. Jacquod, *New J. Phys.* **18**, 103042 (2016).
- [37] S. Soltan, D. Mazauric, and G. Zussman, *IEEE Trans. Control Netw. Syst.* **4**, 288 (2017).
- [38] T. Coletta and P. Jacquod, *IEEE Transactions on Control of Network Systems (Early Access)* (IEEE, 2019), pp. 1–1.
- [39] D. J. Klein and M. Randić, *J. Math. Chem.* **12**, 81 (1993).
- [40] W. Xiao and I. Gutman, *Theor. Chem. Acc.* **110**, 284 (2003).
- [41] By some abuse of language, we often refer to P_i as natural frequencies.
- [42] A. Jadbabaie, N. Motee, and M. Barahona, in *Proceedings of the American Control Conference, Boston, MA, USA* (IEEE, Piscataway NJ, 2004), Vol. 5, pp. 4296–4301.
- [43] J. A. Acebrón, L. L. Bonilla, C. J. Pérez Vicente, F. Ritort, and R. Spigler, *Rev. Mod. Phys.* **77**, 137 (2005).
- [44] L. Guo, C. Zhao, and S. H. Low, in *Proceedings of the IEEE Conference on Decision and Control (CDC), Miami Beach, FL, USA* (IEEE, Piscataway NJ, 2018), pp. 158–165.
- [45] D. Manik, M. Rohden, H. Ronellenfitsch, X. Zhang, S. Hallerberg, D. Witthaut, and M. Timme, *Phys. Rev. E* **95**, 012319 (2017).
- [46] M. Fiedler, *Czechoslovak Math. J.* **23**, 298 (1973).
- [47] B. Bamieh and D. F. Gayme, in *Proceedings of the American Control Conference, Washington, DC, USA* (IEEE, Piscataway NJ, 2013), pp. 5815–5820.
- [48] D. J. Watts and S. H. Strogatz, *Nature* **393**, 440 (1998).
- [49] P. J. Menck, J. Heitzig, J. Kurths, and H. J. Schellnhuber, *Nat. Commun.* **5**, 3969 (2014).